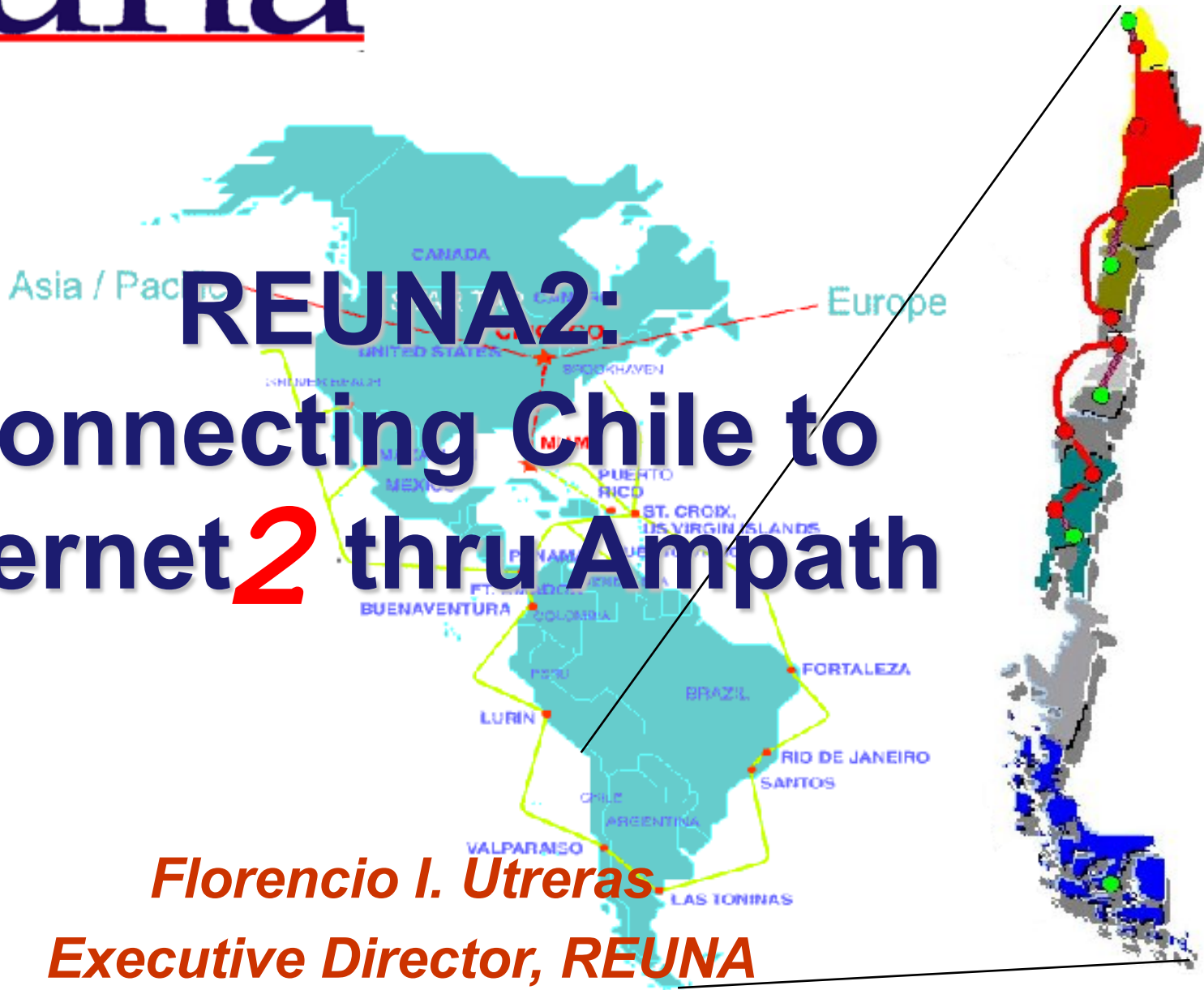


Reuna

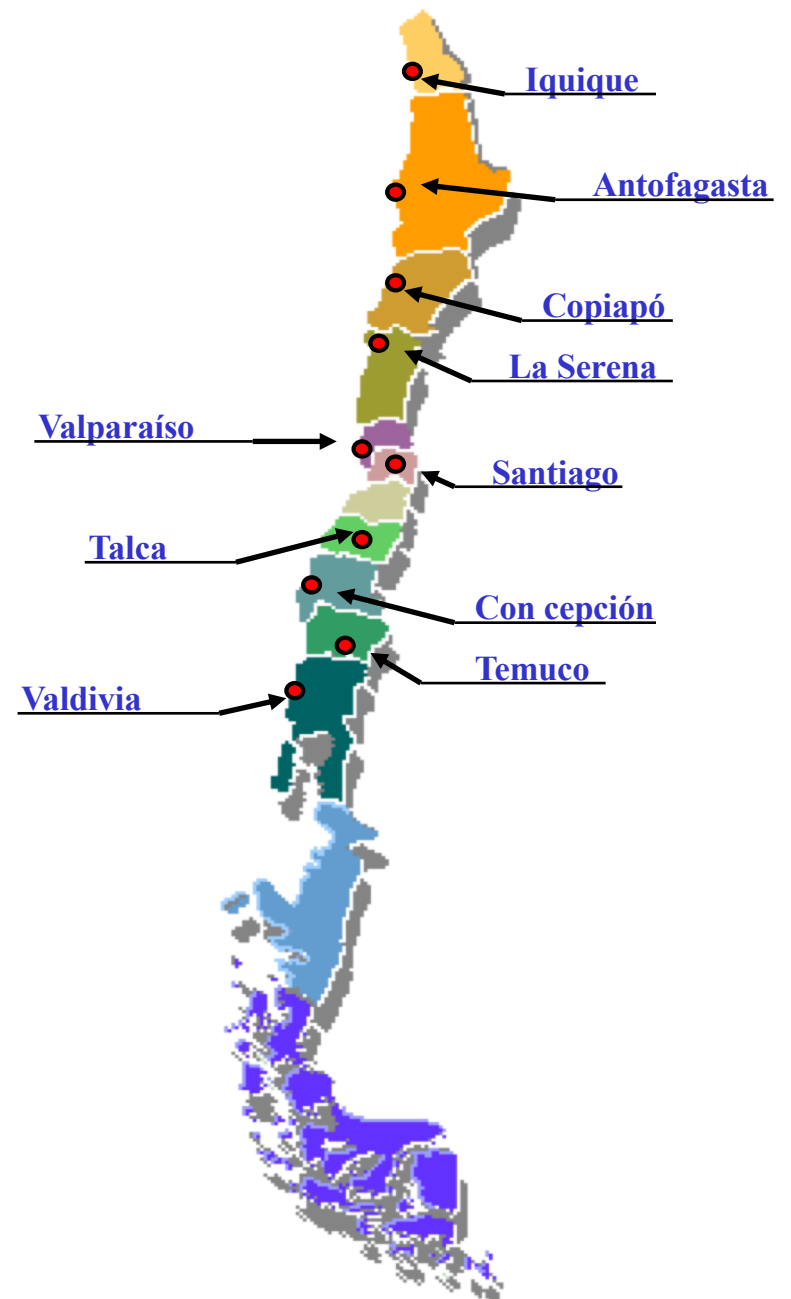
**REUNA2:
Connecting Chile to
Internet² thru Ampath**

Florencio I. Utreras
Executive Director, REUNA
futreras@reuna.cl



Reuna

Geographical Distribution of REUNA2 POP's





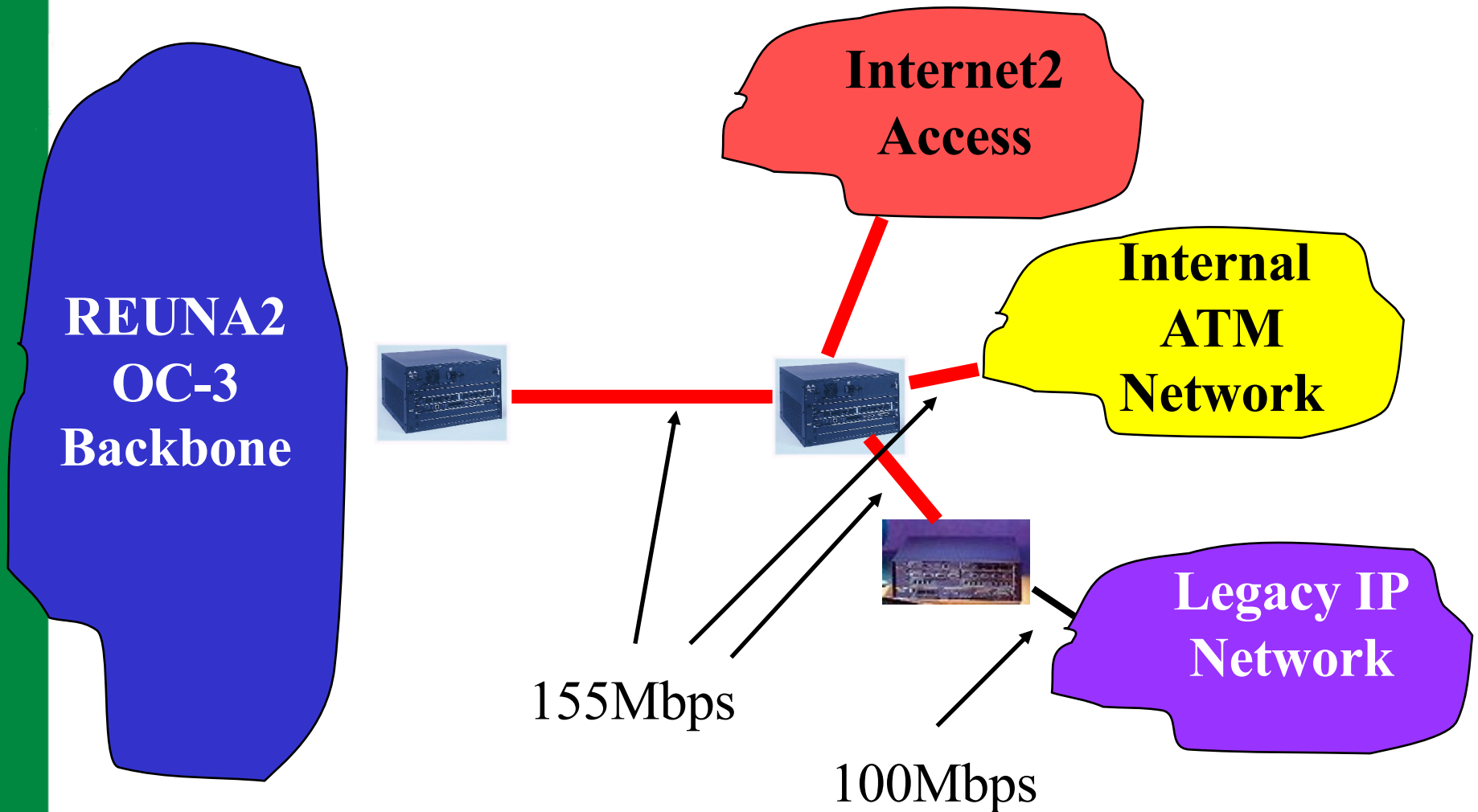
Reuna

REUNA2 POP's

- 10 POP's from Arica to Valdivia
- 155 Mbps ATM/SDH Network
- Centrally operated from Santiago
- Equiped with Cisco Lightstream 1010
- ATM Access to Associate Members

Reuna

Institutional Access Scheme



Basic Services on REUNA2

- **National IP Backbone**
 - 15 Mbps access to each university
 - Native IP MultiCast implemented
 - H.323 MultiPoint Conference Service Active
 - OSPF Routing Scheme
- **Native ATM Services**
 - PVC's, LANE

Internet2 Services

- Dedicated PVC to Access Point in REUNA
- On demand PVC's
- On demand H.323 VideoConferences
- Transparent Caching from National Backbone to Advanced Networks
- On demand FTP to be implemented

The logo for REUNA is a vertical bar on the left side of the slide, divided into a red top half and a green bottom half. A large, dark blue letter 'R' is positioned on the left side of the bar, with its top half overlapping the red section and its bottom half overlapping the green section. To the right of the bar, the word 'euna' is written in a dark blue, serif font, with a thin red horizontal line underneath it.

Reuna

REUNA3
Gigabit Backbone Project

Project Goals

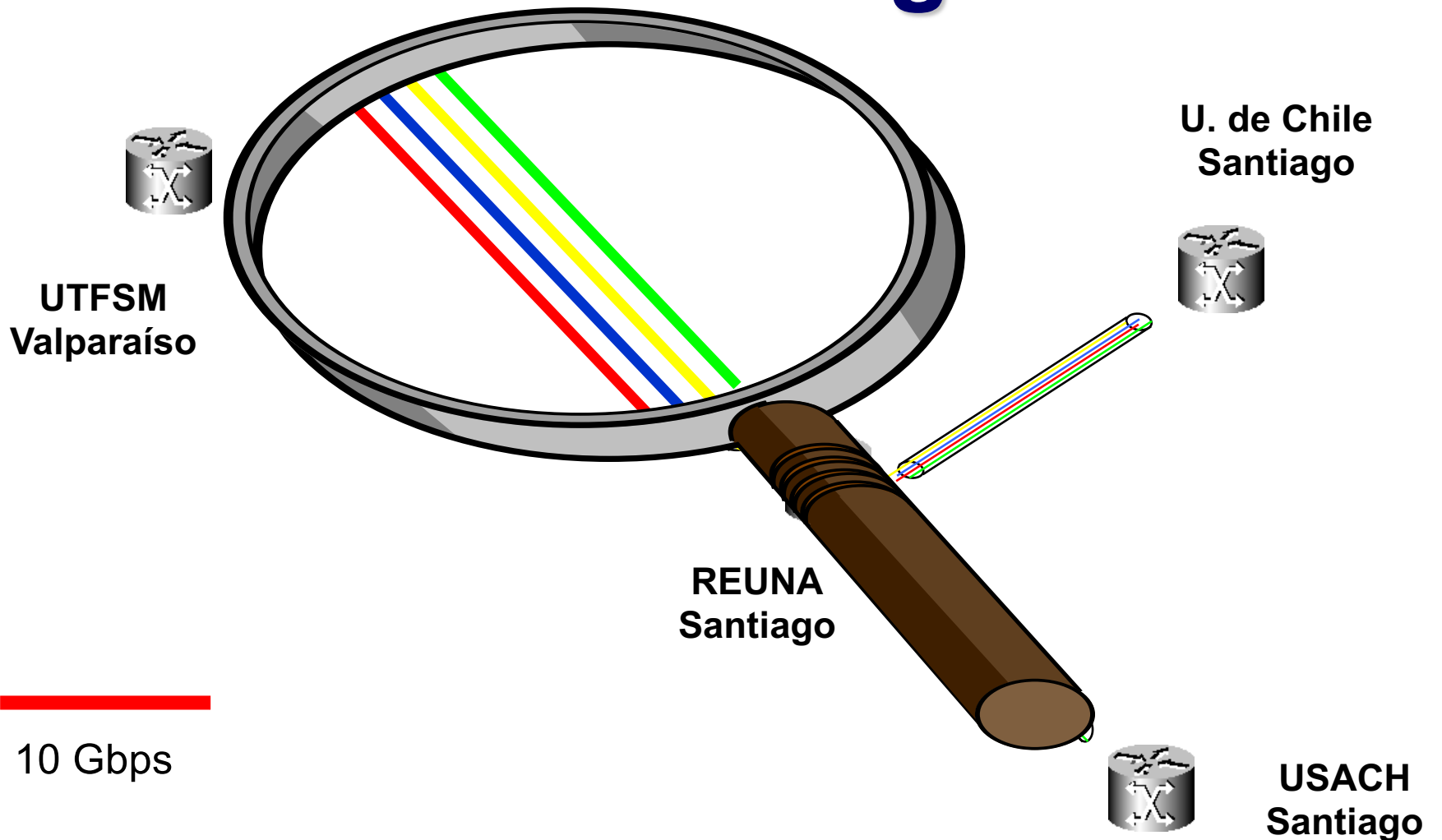
- Develop an Experimental Optical Network based on the use of WDM aiming to serve as a testbed for the research and development of new applications and services in Chile. In particular, research will be conducted in protocols, video applications, voice applications and grid type networks.

The Project

- 4 Nodes: 3 in Santiago, 1 in Valparaiso
- Dark Fiber provided from Santiago to Valparaiso (140 Km) by ImpSat
- Dark Fiber provided in Santiago by Manquehue.Net
- Institutions involved:
 - UTFSM, USACH, U. de Chile, UTA, UFRO, REUNA

Reuna

Network Diagram



Reuna

140 Km of Dark Fiber



Reuna

Collaboration Areas

General Areas

- Educational Streaming Video
 - <http://www.alejandria.cl>
- Distance Learning
 - <http://www.uvirtual.cl>
- Academic Portal
 - <http://www.reuna.cl>
- Voice Over IP
 - http://www.die.uchile.cl/Teleco_frames.html

Collaboration Areas

- **IPV6 Implementation on top of REUNA2 under way**
 - <http://ipv6.inf.uach.cl/>
- **Multimedia Tools and Services**
 - <http://www.accessnova.cl>
- **Wireless**
 - <http://www.elo.utfsm.cl/investigacion/proyectos/2001/mwpcueb.htm>
 - <http://wireless.ufro.cl>

Collaboration Areas

- Ocean and Climate Studies at Universidad de Concepción
 - <http://www.profc.udec.cl>
- Marine Sciences
 - http://www.ucn.cl/FacultadesInstitutos/Fac_Ciencias_del_Mar.asp
- Remote Sensing in Forestry Fires
 - <http://www.pmpr.udec.cl/>

Collaboration Areas

- **Physical Geology (Antartic Studies)**
 - <http://www.cec.uchile.cl/~geologia/>
- **Collaborative Design in Architecture**
 - <http://nova.eic.ubiobio.cl/escarqui/esp/citadinos.html>
- **Medical Imaging**
 - Universidad Austral de Chile



Reuna

Contact

Maite Arratia marratia@reuna.cl

Paola Arellano parellan@reuna.cl

Florencio Utreras futreras@reuna.cl

<http://www.reuna.cl>